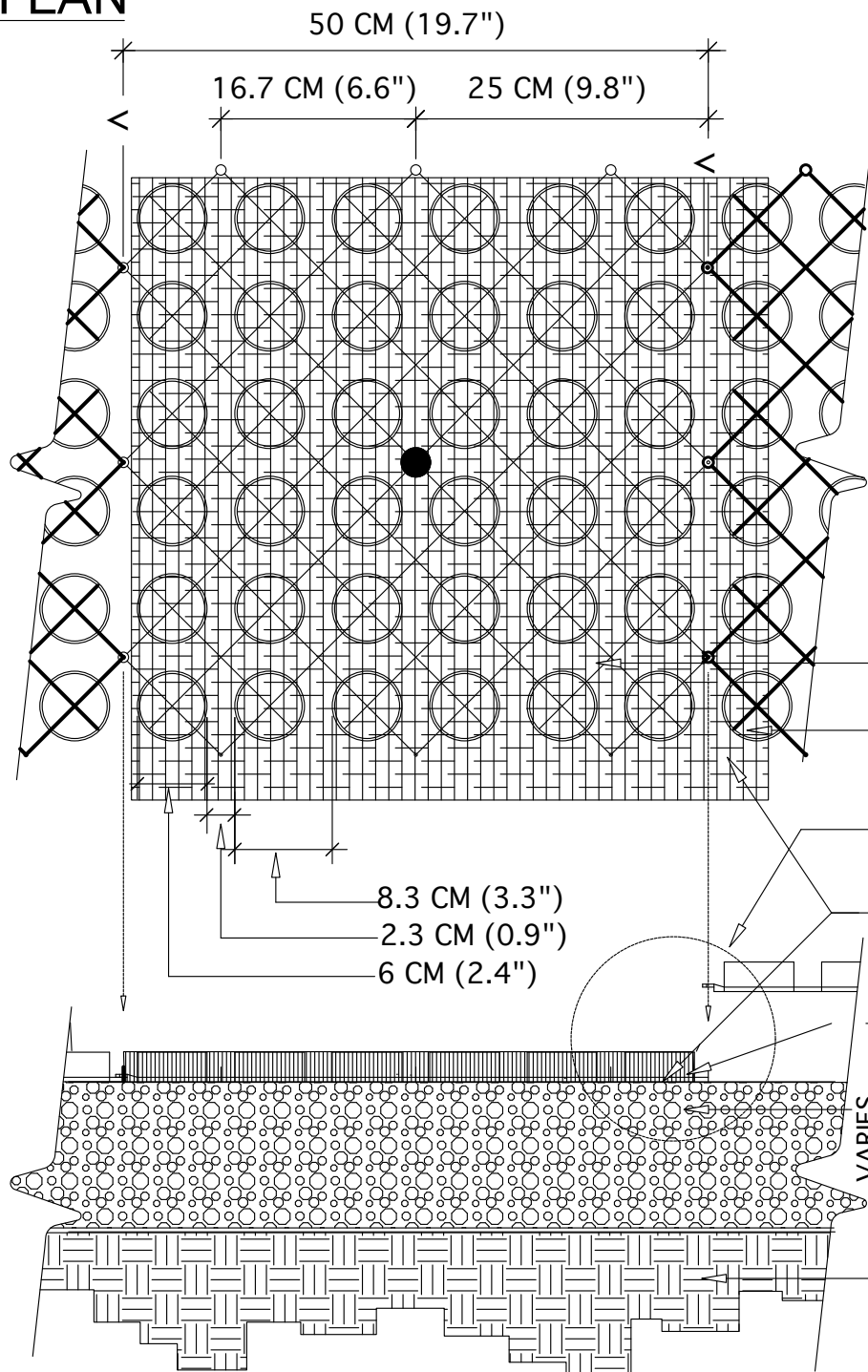


TYPICAL GRAVELPAVE2 DETAIL

CHOOSE THIS PRODUCT FOR REINFORCING GRAVEL WEARING SURFACES

PLAN



SPECIFICATIONS

UNITS

UNIT SIZE - 50 CM X 50 CM X 2.5 CM OR 1 M X 1 M X 2.5 CM
(20" X 20" X 1" OR 40" X 40" X 1")
AVAILABLE IN 9 STANDARD ROLL SIZES

UNIT WEIGHT - 538 GRAMS (19 OZ.)
OR 2.2 KG (4.8 POUNDS)

STRENGTH - 1121 KG/CM² (15,940 PSI)

COLOR - BLACK (STANDARD)

RESIN - 100% POST-CONSUMER

RECYCLED HDPE

FABRIC

WEIGHT - 1.4 TO 1.7 OZ/SY (47-58 GM/M²)

TENSILE - 120 LB/FT² (585 KG/M²)

FLOW - 275 GAL/MIN/SF (11,200 L/MIN/M²)

GRAVELPAVE2

ADJACENT GRAVELPAVE2

SEE ENLARGEMENT BELOW

FILTER FABRIC ATTACHED TO
BOTTOM OF GRAVELPAVE2

GRAVELPAVE2 FILLED WITH 3/16" TO 3/8"
ANGULAR GRAVEL, UNIFORM SIZE, WASHED

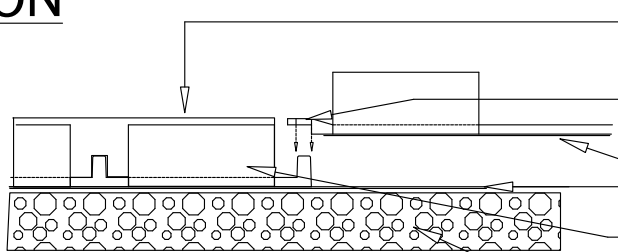
COMPACTED SANDY GRAVEL ROAD BASE
- 95% MODIFIED PROCTOR DENSITY

- SEE FULL TECHNICAL SPECIFICATIONS FOR COMPOSITION

COMPACTED SUBGRADE

VARIES
AS PER LOADING
REQUIREMENTS

SECTION



TOP OF GRAVEL

GRAVELPAVE2 ATTACH WITH
SNAP FIT FASTENERS

FILTER FABRIC - OVERLAPPING JOINTS

FILL RING SECTION WITH
3/16" TO 3/8" ANGULAR GRAVEL, UNIFORM SIZE, WASHED

COMPACTED SANDY GRAVEL
BASE COURSE

ENLARGEMENT

NOT TO SCALE